



RUTGERS

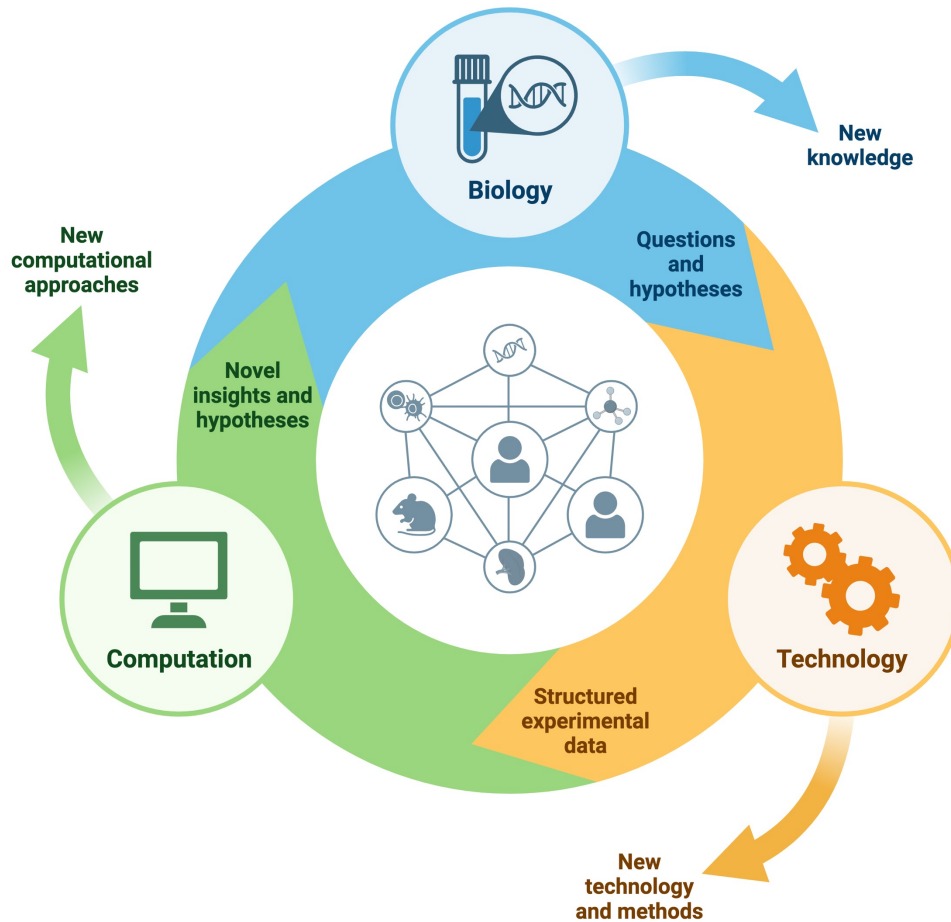
School of Arts and Sciences
DEPARTMENT OF GENETICS

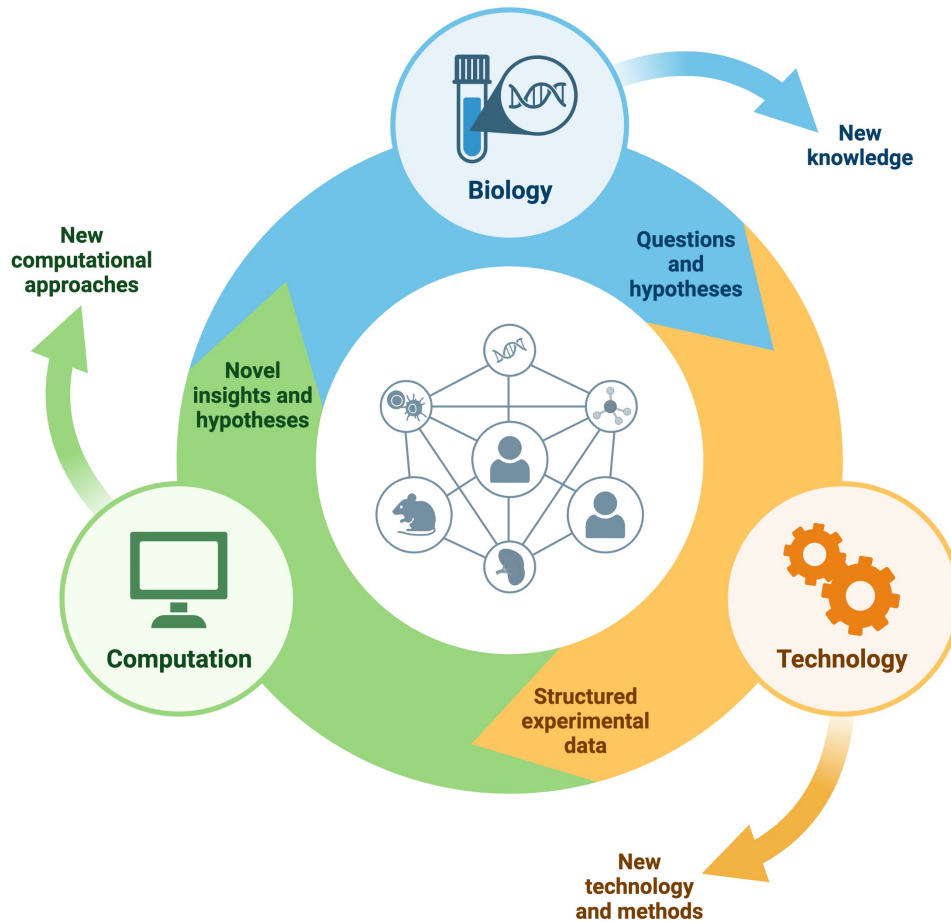


Using Single-cell Computation and Biology to Dissect Myeloid Cell States in Health and Disease

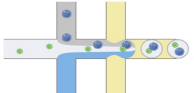
MBS orientation

2023.8.25

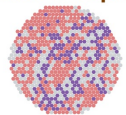




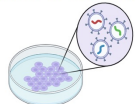
scRNA/snRNA-seq,
snATAC-seq
Multiome

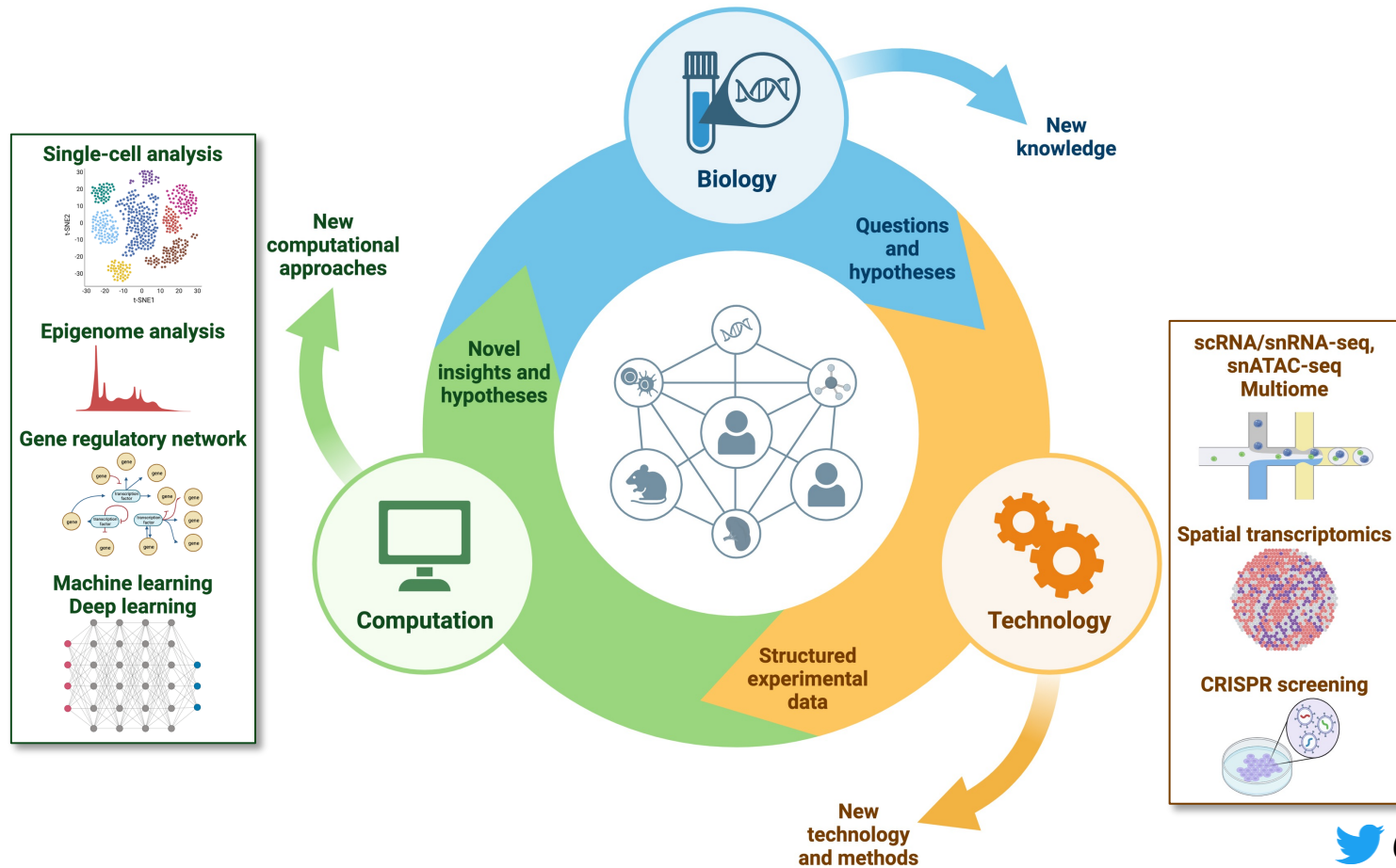


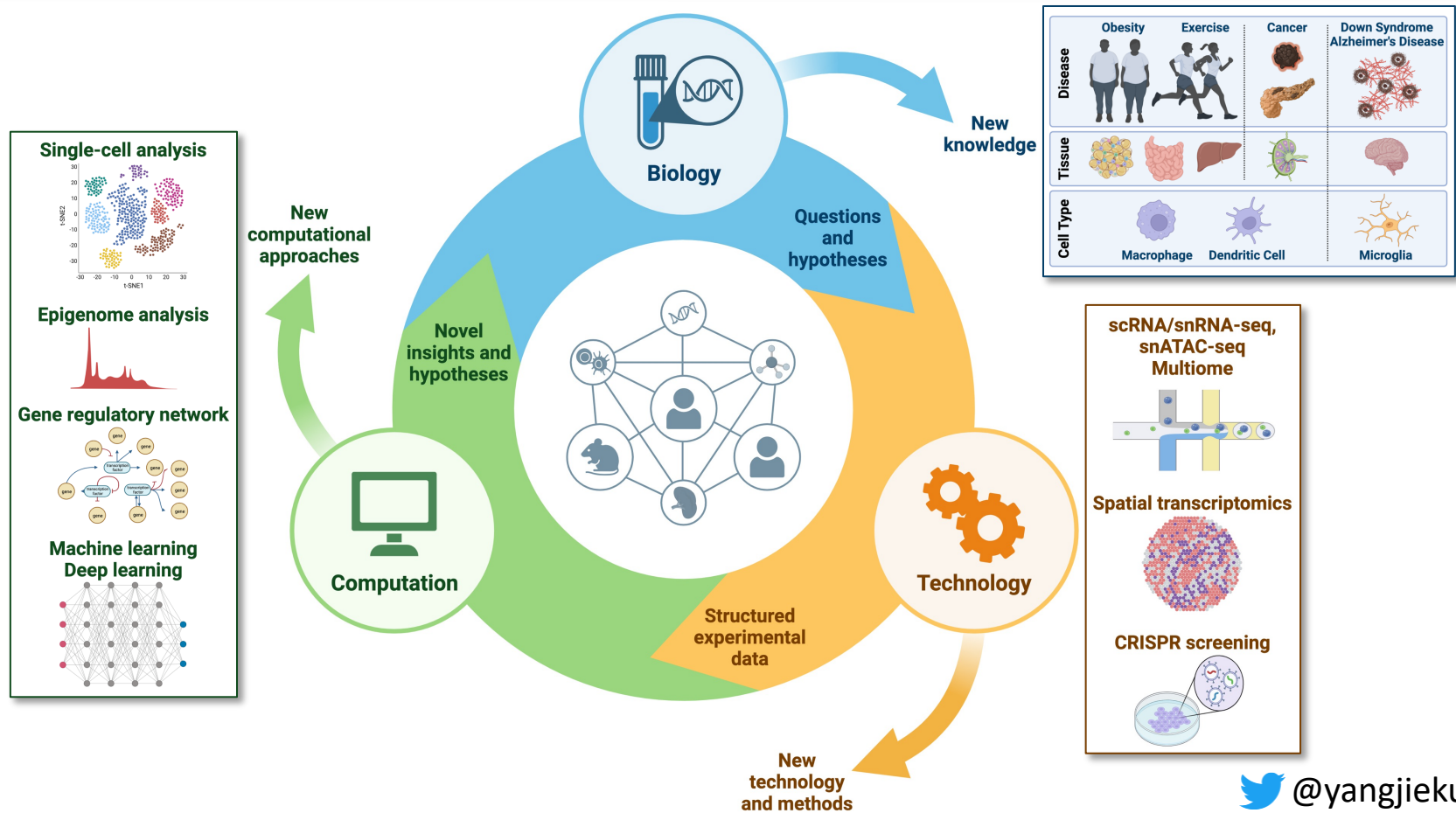
Spatial transcriptomics



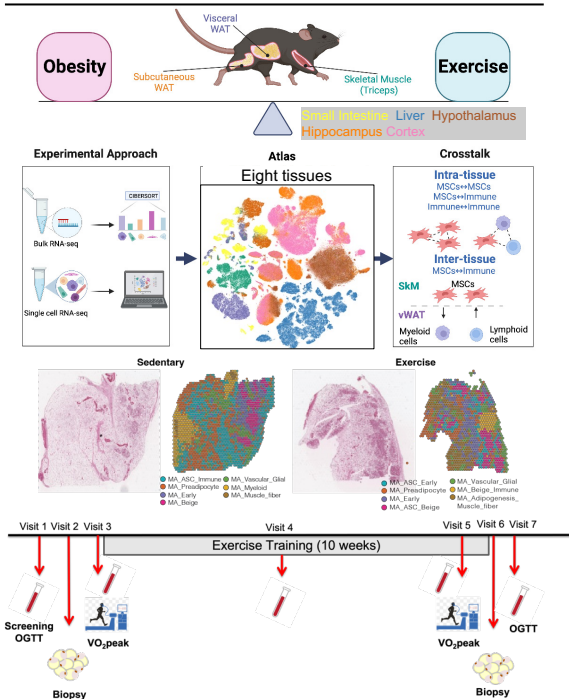
CRISPR screening





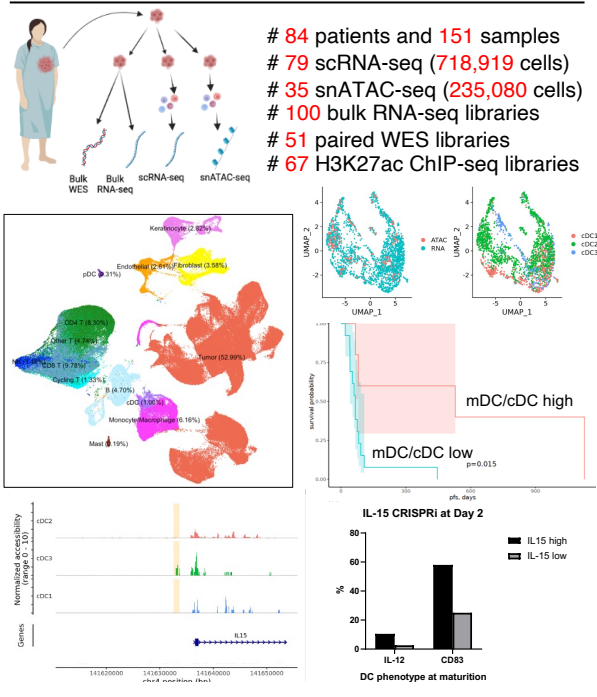


Multi-tissue single-cell dissection of the obesity-exercise axis in mouse & human



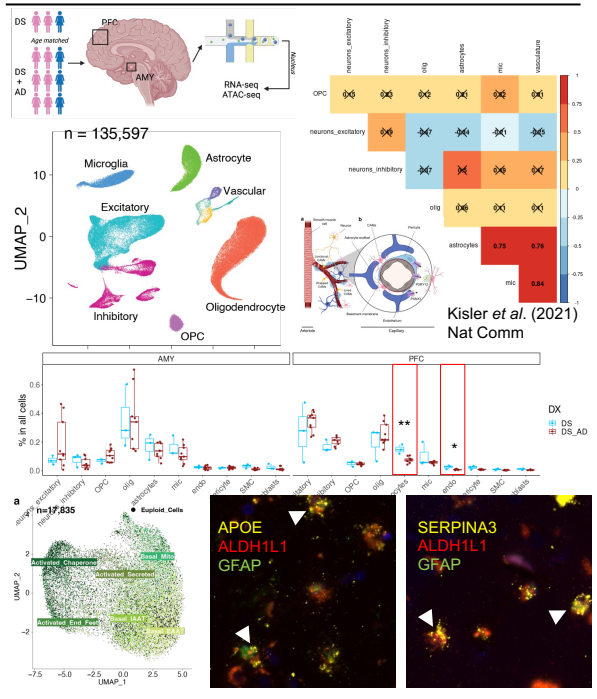
Yang, *et al.* Cell Metabolism (2022)

Understanding and epigenetic manipulation of dendritic cell state in the tumor microenvironment



Yang, *et al.* Nature (submitted)

Epigenomic & transcriptomic landscape of Alzheimer's Disease in Down Syndrome



Yang, *et al.* (in preparation) @yangjiekun

Collaborators and Mentees

Within Rutgers

Metabolism



Mike Verzi, Ph.D.
Professor, Department of Genetics
CINJ



Steven Malin, Ph.D.
Associate Professor, Department of
Kinesiology and Health



Wenwei Hu, Ph.D.
Professor, Department of Radiation
Oncology, CINJ

Cancer



Zhongren (David) Zhou, M.D., Ph.D.
Professor, RWJ Medical School



Peng Jiang, Ph.D.
Assistant Professor, Department of
Cell Biology and Neuroscience



Biju Parekkadan, Ph.D.
Associate Professor, Department of
Biomedical Engineering

Down Syndrome

Method/Assay Dev.

More to come...

Past Mentees



Ruiwen (Doris) Fu
MIT Master of Engineering 2022
Scientist @ Cellarity Boston
Will apply for PhD this fall



Raina Thomas
MIT CS & Biology undergrad 2023
Scientist @ Deepmind London
Admitted to all the top comp bio
PhD programs, e.g., Harvard BIG
Won Merck Prize for her research

Current Mentees

Cassia Wang (MIT Master of Engineering, expected to graduate by Dec. 2023)
Wendi Liu (Harvard Biotechnology Master, apply for PhD this fall)
Anusha Puri (MIT BME undergrad, apply for PhD this fall)
Lee Chen (MIT CS & Biology undergrad)

Join us!

Outside Rutgers

Postdoc Mentors



Manolis Kellis, Ph.D.
Professor, MIT Department of CS
Head, MIT Comp. Biology group
Broad Institute of MIT and Harvard



Li-Lun Ho
Ben Lengerich
Kiki Galani



Mazhar Adli, Ph.D.
Associate Professor, Feinberg
School of Medicine at Northwestern
Robert Lurie Comprehensive
Cancer Center



Obesity-Exercise Study



Laurie J. Goodyear, Ph.D.
Professor of Medicine
Harvard Medical School
Section Head and Senior Investigator
Joslin Diabetes Center



Maria Vamvini
Pasquale Nigro
Jan-Willem Middelbeek
Michael Hirshman

Cancer Study



Dennie Frederick
Tatyana Sharova

Genevieve Boland, MD, Ph.D.
Vice Chair of Research, Surgery
Surgical Director, Termeer Center



Amy Huang
Tyler Aprati

David Liu, MD, MS, MPH
Medical Oncologist
Assistant Professor of Medicine, HMS



Sandeep Yadav
Wentao Deng

Kunal Rai, Ph.D.
Associate Professor of Genomic Medicine
MD Anderson Cancer Center

Machine Learning/Deep Learning Study



Caleb Ellington

Eric Xing, Ph.D.
President at Mohamed bin Zayed U. of AI
Professor of Computer Science, CMU



Marcus Alvarez
Sankha Das

Paivi Pajukanta, MD, Ph.D.
Department Vice Chair, Professor
Human Genetics, UCLA



Tom Watkins

Kevin Litchfield, Ph.D.
Group Leader, Tumor Immunogenomics
and Immunosurveillance (TIGI) Lab, UCL

Down Syndrome-Alzheimer's Disease



Dong Shin Park
Ada Yuan-Da Lin

Li-Huei Tsai, Ph.D.
Director, Picower Institute for Learning
and Memory, Professor of Neuroscience



Sierra Wright
Cherie Stringer
Leslie Vazquez-Rangel
Lisi Flores-Aguilar

Elizabeth Head, Ph.D.
Professor, University of California-
Irvine



Huan Wang

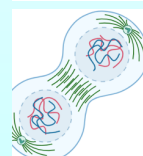
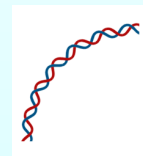
Tanya Mayadas, Ph.D.
Professor of Pathology, Brigham and
Women's Hospital & HMS

Mentoring extends beyond mere knowledge transfer. I champion:

1. **Intellectual Equality** - Every question merits exploration; embrace the freedom to delve into science.
2. **Shared Growth** - We evolve through failures, transforming them into successes.
3. **Collaborative Spirit** - I neither compete with mentees over contributions nor foster competition within the team.
4. **Holistic Wellness** - Prioritizing mental and physical well-being over sheer productivity.
5. **Transparency** - Decisions and resources are communicated openly.

Our lab is a thriving hub of innovation, defined by:

1. **Kindness** - Fostering a compassionate atmosphere.
2. **Integrity** - Upholding unwavering ethical standards.
3. **Collaboration** - Achieving excellence through teamwork.
4. **Openness** - Welcoming diverse ideas and perspectives.





RUTGERS

School of Arts and Sciences
DEPARTMENT OF GENETICS



Contact us! E-mail us! Join us!

jackie.yang@rutgers.edu; jkyang@mit.edu.

The Yang Lab is actively seeking talented individuals
for various positions! More details:

<https://lnkd.in/eVN4eBDT>